

# Majority of Canadians strongly support or somewhat support legislation to create a presumption of equal parenting in child custody cases

## 2017-1061 Equal Parenting Summary - DRAFT

submitted by Nanos to the Canadian Association for Equality, September 2017  
(Submission 2017-1061)



# Summary

There is strong support among Canadians with regards to equal parenting legislation in child custody cases.

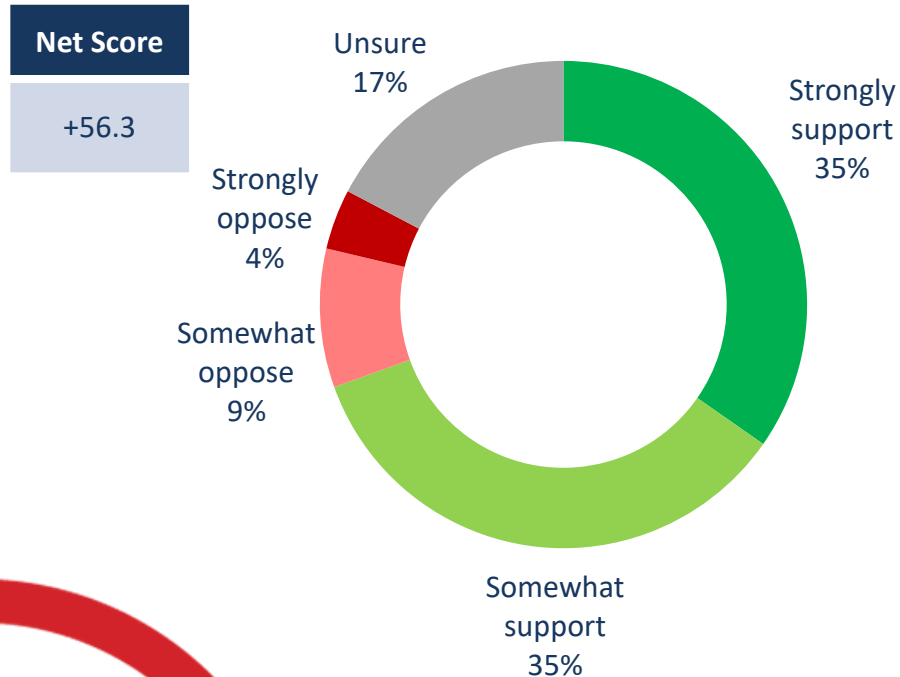
- **Over two in three Canadians strongly support or somewhat support legislation to create a presumption of equal parenting in child custody cases** – When asked their support for federal and provincial legislation to create a presumption of equal parenting in child custody cases, a majority of Canadians say they strongly support (35%) or somewhat support (35%) this, while nine per cent somewhat oppose and four per cent strongly oppose it. Seventeen per cent are unsure.

Nanos conducted an RDD dual frame (land- and cell-lines) hybrid telephone and online random survey of 1,000 Canadians, 18 years of age or older, between August 30<sup>th</sup> and September 1<sup>st</sup>, 2017 as part of an omnibus survey. Participants were randomly recruited by telephone using live agents and administered a survey online. The margin of error for a random survey of 1,000 Canadians is  $\pm 3.1$  percentage points, 19 times out of 20.

This study was commissioned by the Canadian Association for Equality.

# Support for legislation to create presumption of equal parenting

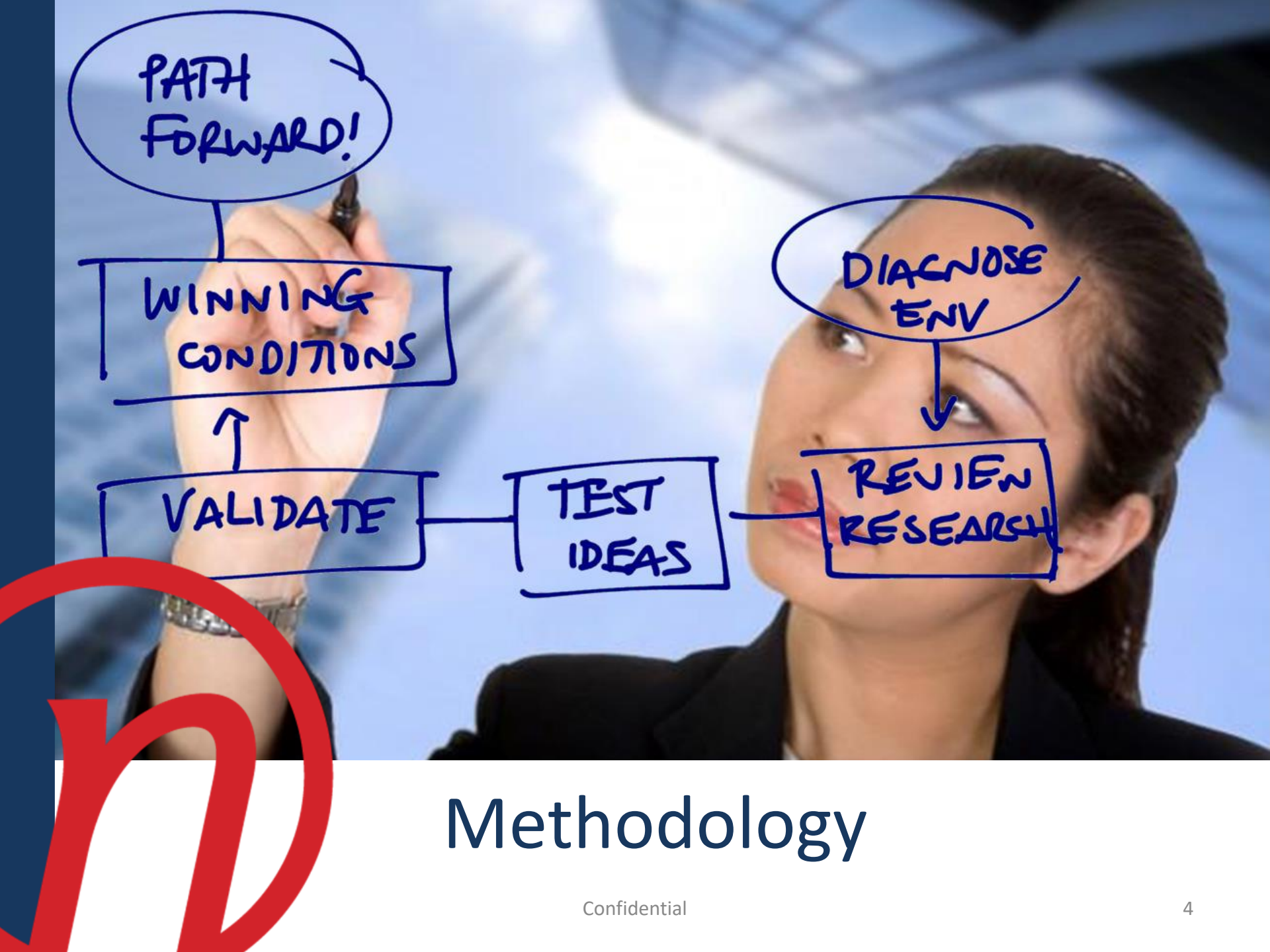
Source: Nanos Research, RDD dual frame hybrid telephone and online random survey, August 30<sup>th</sup> to September 1<sup>st</sup>, 2017, n=1000, accurate 3.1 percentage points plus or minus, 19 times out of 20.



Subgroups	Strongly support/ Somewhat support
Atlantic (n=100)	74.7%
Quebec (n=250)	66.4%
Ontario (n=300)	70.9%
Prairies (n=200)	69.2%
British Columbia (n=150)	68.8%
Male (n=478)	77.7%
Female (n=522)	61.6%
18 to 34 (n=242)	67.8%
35 to 54 (n=358)	72.2%
55 plus (n=400)	68.4%

**\*Note:** Charts may not add up to 100 due to rounding

**QUESTION** – Do you strongly support, somewhat support, somewhat oppose or strongly oppose federal and provincial legislation to create a presumption of equal parenting in child custody cases?



# Methodology

# Methodology

Nanos conducted an RDD dual frame (land- and cell-lines) random telephone survey of 1,000 Canadians, 18 years of age or older, between August 30<sup>th</sup> and September 1<sup>st</sup>, 2017 as part of an omnibus survey. Participants were randomly recruited by telephone using live agents and administered a survey. The sample is geographically stratified to be representative of Canada.

Individuals were randomly called using random digit dialling with a maximum of five call backs.

The margin of error for a random survey of 1,000 Canadians is  $\pm 3.1$  percentage points, 19 times out of 20.

The research was commissioned by the Canadian Association for Equality (CAFE).

Note: Charts may not add up to 100 due to rounding.



# About Nanos

Nanos is one of North America's most trusted research and strategy organizations. Our team of professionals is regularly called upon by senior executives to deliver superior intelligence and market advantage whether it be helping to chart a path forward, managing a reputation or brand risk or understanding the trends that drive success. Services range from traditional telephone surveys, through to elite in-depth interviews, online research and focus groups. Nanos clients range from Fortune 500 companies through to leading advocacy groups interested in understanding and shaping the public landscape. Whether it is understanding your brand or reputation, customer needs and satisfaction, engaging employees or testing new ads or products, Nanos provides insight you can trust.



View our brochure

## **Nanos Research**

North America Toll-free

1.888.737.5505

[info@nanosresearch.com](mailto:info@nanosresearch.com)



# Technical Note

Element	Description	Element	Description
Organization who commissioned the research	Canadian Association for Equality	Weighting of Data	The results were weighted by age and gender using the latest Census information (2014) and the sample is geographically stratified to ensure a distribution across all regions of Canada. See tables for full weighting disclosure
Final Sample Size	1000 Randomly selected individuals.	Screening	Screening ensured potential respondents did not work in the market research industry, in the advertising industry, in the media or a political party prior to administering the survey to ensure the integrity of the data.
Margin of Error	±3.1 percentage points, 19 times out of 20.	Excluded Demographics	Individuals younger than 18 years old; individuals without land or cell lines could not participate.
Mode of Survey	RDD dual frame (land- and cell-lines) random telephone omnibus survey	Stratification	By age and gender using the latest Census information (2014) and the sample is geographically stratified to be representative of Canada. Smaller areas such as Atlantic Canada were marginally oversampled to allow for a minimum regional sample.
Sampling Method Base	The sample included both land- and cell-lines RDD (Random Digit Dialed) across Canada.	Estimated Response Rate	13 percent, consistent with industry norms.
Demographics (Captured)	Atlantic Canada, Quebec, Ontario, Prairies, British Columbia; Men and Women; 18 years and older. Six digit postal code was used to validate geography.	Question Order	Question order in the preceding report reflects the order in which they appeared in the original questionnaire.
Fieldwork/Validation	Live interviews with live supervision to validate work as per the MRIA Code of Conduct	Question Content	This was module six of an omnibus survey. Previous modules related to unprompted national issue of concern, immigration, health, foreign policy, marijuana, and consumer research.
Number of Calls	Maximum of five call backs.	Question Wording	The questions in the preceding report are written exactly as they were asked to individuals.
Time of Calls	Individuals were called between 12-5:30 pm and 6:30-9:30pm local time for the respondent.	Survey Company	Nanos Research
Field Dates	August 30 <sup>th</sup> to September 1 <sup>st</sup> , 2017.	Contact	Contact Nanos Research for more information or with any concerns or questions. <a href="http://www.nanosresearch.com">http://www.nanosresearch.com</a> Telephone:(613) 234-4666 ext. Email: info@nanosresearch.com.
Language of Survey	The survey was conducted in both English and French.		



# Tabulations

Confidential





## 2017-1061 – Canadian Association for Equality – Creation of presumption in child custody cases – STAT SHEET

			Region						Gender		Age		
			Canada 2017-08	Atlantic Canada	Quebec	Ontario	Prairies	British Columbia	Male	Female	18 to 34	35 to 54	55 plus
Question - Do you strongly support, somewhat support, somewhat oppose or strongly oppose federal and provincial legislation to create a presumption of equal parenting in child custody cases?	Total	Unwgt N	1000	100	250	300	200	150	478	522	242	358	400
		Wgt N	1000	100	250	300	200	150	491	509	271	340	389
	Strongly support	%	34.7	39.1	35.7	33.5	31.4	37.0	41.4	28.3	38.1	36.7	30.6
	Somewhat support	%	34.8	35.6	30.7	37.4	37.8	31.8	36.3	33.3	29.7	35.5	37.8
	Somewhat oppose	%	9.2	7.6	9.5	9.4	9.8	8.2	5.7	12.5	7.1	9.6	10.2
	Strongly oppose	%	4.0	2.2	3.8	5.7	3.8	2.6	2.9	5.0	4.3	2.9	4.8
	Unsure	%	17.3	15.5	20.3	13.9	17.2	20.4	13.6	20.9	20.8	15.3	16.7

Nanos conducted an RDD dual frame (land- and cell- lines) hybrid telephone and online random survey of 1,000 Canadians, 18 years of age or older, between August 30<sup>th</sup> and September 1<sup>st</sup>, 2017. The margin of error for a random survey of 1,000 Canadians is  $\pm 3.1$  percentage points, 19 times out of 20.

[www.nanosresearch.com](http://www.nanosresearch.com)